

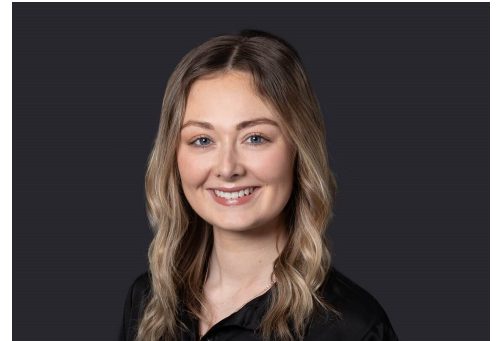
Hannah Mole

Associate

 **Manchester**

hannah.mole@brownejacobson.com

+44 (0)330 045 1025



Hannah is a Commercial Associate in the firm's commercial team, based in Manchester. Hannah advises on commercial contracts, data protection and transactional intellectual property matters.

Hannah completed her training at the firm and subsequently joined the commercial team as a qualified associate in February 2025. She represents a diverse array of clients, including major corporates, charities, startups, and educational institutions, with a particular focus on acquisitions and mergers.

A notable aspect of her career is her involvement in the intellectual property support during Modella Capital's acquisition of WHSmith. Hannah has accumulated extensive experience in managing general commercial contracts, including supply agreements, software development contracts, and sponsorship agreements.

Additionally, she provides guidance to tech, media, and retail clients on comprehensive data compliance programs and has experience in addressing issues related to defamation and enforcement.

Expertise

Services

Commercial law

Data protection and privacy

Intellectual property