

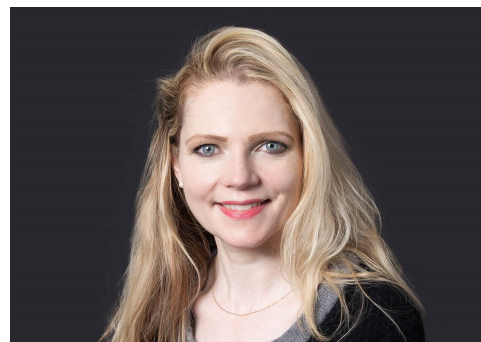
Heather Caddy

Partner

 Nottingham

heather.caddy@brownejacobson.com

+44 (0)3300452516



Heather is a partner in the healthcare advisory and inquests team. Heather has a particular specialism in inquests and has significant experience of handling matters for both public and independent sector clients. Heather is recognised as a Rising Star in the Legal 500 and has been referenced for four consecutive years.

Heather re-joined Browne Jacobson in August 2022 having originally been with the firm since 2013. Heather qualified in 2008 and has specialised solely in healthcare related matters since 2010, originally focusing on claims and inquests, and in the years that followed, expanding her practice to include general advisory and disputes in relation to medical treatment. Heather has significant experience representing public and independent sector clients at inquests, and in particular complex, often high profile, Article 2 and jury inquests relating to detained patients. She regularly advises in relation to governance risks associated with inquests and also deals with a wide variety of advisory matters, including cases heard in the Court of Protection and those involving the High Court's inherent jurisdiction.

Expertise

Sectors

Ambulance trusts

Independent health and care

NHS mental and community
health trusts

Health and care

Featured experience

Choking death in Care Home

Provided support to care home witnesses and representation at inquest in particularly challenging care home death. Advice given in relation to the governance challenges.

Death of a Catholic Priest

Represented a Diocese in relation to the death of a priest who hanged himself days after being informed of historical allegations against him being investigated by the Police. Advice given in relation to multiple aspects of this complex case. Conclusion of suicide recorded with no adverse findings involving the Diocese.

Inquest involving stabbing of child

Supported the Acute Hospital Trust in relation to the risk and governance aspects of a case involving pre-hospital cases in collaboration with the Ambulance Trust.

Prisoner death involving smuggled drugs

Represented the current healthcare provider at an inquest involving the death of an inmate who had swallowed a bag of drugs smuggled into prison by his mother. Advised in relation to Regulation 28 risks and supported the organizational learning witness and the GP, who was the prison GP at the time of the death.