

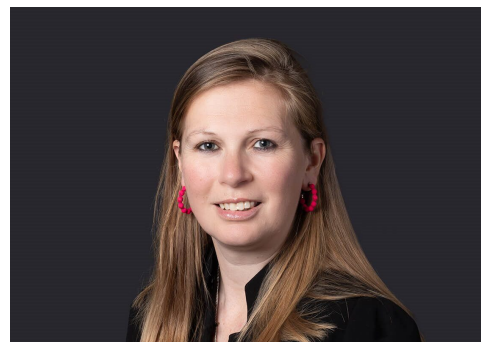
# Hannah Connors

Senior Associate

 Nottingham

[hannah.connors@brownejacobson.com](mailto:hannah.connors@brownejacobson.com)

+44 (0)330 045 2841



Hannah is a Senior Associate in Browne Jacobson's Private Client team. She advises a broad range of individuals, families and trustees regarding UK tax, trusts and succession planning.

As a farmer's daughter, she has a particular interest in working with farming families and landed estates. Her experience includes advising on lifetime tax planning, asset protection and estate planning opportunities including in relation to agricultural property and business property reliefs.

---

## Expertise

### Services

Estates and rural services

Probate and the administration of  
deceased persons' estates

Trusts, wills and estates

---

## Featured experience

### Family trust restructuring

Advising on restructuring of connected family trusts to meet the needs of key beneficiaries and to mitigate inheritance tax exposure.

### Environmental scheme opportunities

Advising on inheritance tax risks of taking agricultural land out of agricultural production.

### Development land opportunities

Advising on transferring agricultural land with development potential into trust and drafting the relevant trust documents to secure an improved inheritance tax outcome.

## **Sale of family business**

Advising on tax benefits of transferring shares in founder's company to family trusts prior to sale and drafting the requisite implementation documents.