


# Learning for CCG's - recent healthcare employment cases and the pitfalls to avoid

There is a profound and notable change occurring in guidance from the centre and emerging case law on the handling of NHS Workforce matters.

 04 March 2020

There is a profound and notable change occurring in guidance from the centre and emerging case law on the handling of NHS Workforce matters. Baroness Dido Harding's letter in May 2019 and the interim People Plan puts workforce culture front and centre and builds on the work arising out of the "Just Culture" initiatives and a number of high profile reviews looking at staff welfare in disciplinary and grievance matters. Some of these issues are proving to be complex for Acute Trusts, often with greater Human Resources functions, so how can CCGs put themselves in the best position to meet the changes in handling workforce issues?

In this webinar recording, employment healthcare lawyers, Bridget Prosser and Jacqui Atkinson discuss changes in the approach to handling NHS Workforce matters and how they should be implemented.

.cta-download-button { cursor: pointer; display: inline-block; padding-top: 9px; background: #b40838; border-radius: 0px; color: #fff; overflow: hidden; position: relative; margin-left: 5px; font-weight: bold; text-decoration: none; border: #b40838; height: 40px; font-size: 16px; width: 100%; text-align: center; line-height: 40px; max-width: 320px; margin-top: 30px; } .cta-download-button:hover { background: #91082e; line-height: 40px; } .cta-download-button a, .cta-download-button a:visited, .cta-download-button p a:hover { color: #ffffff !important; text-decoration: none; } .embed-container { position: relative; padding-bottom: 56.25%; height: 0; overflow: hidden; max-width: 100%; } .embed-container iframe, .embed-container object, .embed-container embed { position: absolute; top: 0; left: 0; width: 100%; height: 100%; }

For further training and resources, visit our [LinkedIn showcase page](#)

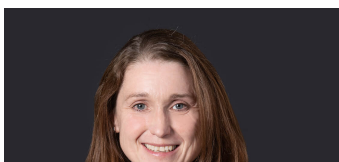
## Speakers



**Jacqui Atkinson**  
Head of Employment Healthcare

[jacqui.atkinson@brownejacobson.com](mailto:jacqui.atkinson@brownejacobson.com)

+44 (0)330 045 2547



**Bridget Prosser**  
Partner



[bridget.prosser@brownejacobson.com](mailto:bridget.prosser@brownejacobson.com)

+44 (0)330 045 2964

## Contact



Jacqui Atkinson

Head of Employment Healthcare

[jacqui.atkinson@brownejacobson.com](mailto:jacqui.atkinson@brownejacobson.com)

+44 (0)330 045 2547

---

## Related expertise

### Sectors

Commissioner and integrated  
care systems

Health