

Browne Jacobson advises Manchester University NHS Foundation Trust on North Manchester General Hospital acquisition

On 1 April Manchester University NHS Foundation Trust (MFT) completed its acquisition of North Manchester General Hospital (NMGH), the next step in the creation of a Single Hospital Service for the population of Manchester.

01 April 2021

On 1 April Manchester University NHS Foundation Trust (MFT) completed its acquisition of North Manchester General Hospital (NMGH), the next step in the creation of a Single Hospital Service for the population of Manchester.

Law firm Browne Jacobson have been working closely with MFT on its acquisition of NMGH and are delighted to have supported the transaction.

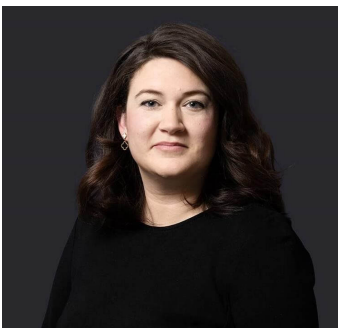
NMGH is the principal healthcare facility for North Manchester and the surrounding boroughs and provides employment to over 2,000 people, many of whom live locally. It has been independently assessed as being in desperate need of rebuilding and today's acquisition by MFT paves the way for an ambitious redevelopment of the NMGH site to improve health and wellbeing for communities across North Manchester.

Peter Blythin, Group Executive Director of Workforce and Corporate Business and SRO for the project, said:

"Browne Jacobson worked closely with the Trust on this acquisition, which is part of MFT's journey to providing a single hospital service for Manchester. Browne Jacobson provided invaluable support to guide the Trust through this complex major transaction and were innovative and responsive in dealing with the unique challenges that we have faced. Quality legal advice at its best!"

The Browne Jacobson team was led by [Christian Dingwall](#), supported by [Rebecca Hainsworth](#) in the Commercial Health Team. Christian and Rebecca were assisted by lawyers from across Browne Jacobson's health practice including employment and real estate.

Contact



Kara Shadbolt

Senior PR & Communication Manager

kara.shadbolt@brownejacobson.com

+44 (0)330 045 1111

Related expertise