

Timpson Review - managed moves

One area addressed by the Timpson review of exclusions published this week was 'managed moves'.

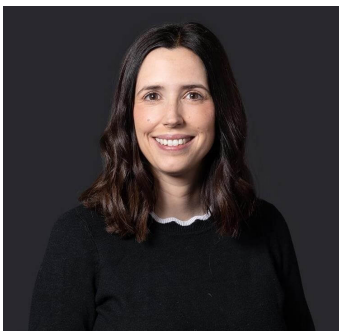
13 May 2019

One area addressed by the [Timpson review of exclusions](#) published this week was 'managed moves'. Current guidance is clear that managed moves should be used as an alternative to exclusion. As with other areas of exclusions however, Timpson identifies variation in practice and misunderstanding amongst schools.

Managed moves require the agreement of the existing school, parent and proposed new school and we often see confusion around their application. For example, the concept of them being an 'alternative' to exclusion can distort the exclusions process if they are (wrongly) used as a bargaining tool, sometimes even after an exclusion decision has apparently been taken. Confusion is perhaps not surprising given how light the current exclusions guidance is on managed moves.

Timpson has recommended that the DfE consults on and issues clear guidance on how managed moves should be conducted and the DfE has agreed to this in principle. Further guidance will hopefully give school leaders greater confidence in exploring the managed move route and ensuring that where an exclusion decision is necessary, it is lawful.

Contact



Katie Michelin

Partner

katie.michelon@brownejacobson.com

+44 (0)115 976 6189

Related expertise

Services

Governance of schools and colleges

HR services for schools and academies

Pupil behaviour and school exclusions

School admission services

