

Browne Jacobson advises developer on sale of 66 bed care home site

Browne Jacobson's real estate team have advised developer Charterpoint on the sale of a 2.2acre site at Westfield Park in Louth earmarked for a 66-bed care home to LNT Care Developments Ltd.

03 July 2020

Browne Jacobson's real estate team have advised developer Charterpoint on the sale of a 2.2acre site at Westfield Park in Louth earmarked for a 66-bed care home to LNT Care Developments Ltd.

The care home, which was given planning permission by East Lindsey District Council back in April this year, will sit alongside the prime greenfield residential development at Westfield Park and comprise 66 individual bedrooms with en-suite facilities, communal spaces for socialising, dining and recreational use, car parking, landscaping, and a secure bike store.

Charterpoint is a Nottingham based property development company specialising in the delivery of homes for older people, including care homes, independent and assisted living accommodation.

Adrian Goose, Chief Executive of Nottingham-based Charterpoint Group, said: *"We are delighted to have completed the sale of this superb site on the edge of Louth. It is in an ideal situation - the perfect place to build a modern care home, offering excellent facilities to residents."*

"Operator demand for care home development opportunities has proved resilient pointing to an accelerating trend for purpose-built facilities."

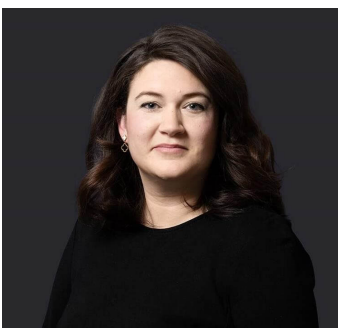
The Browne Jacobson team advising Charterpoint comprised [Sarah Parkinson](#) and [Kassra Powles](#).

Senior associate **Kassra Powles**, added:

"This development is in a great location and presents an outstanding opportunity to develop a market leading care home."

"The deal shows that despite the uncertain economic landscape appetite in high growth areas such as the care sector remains strong."

Contact



Kara Shadbolt

Senior PR & Communication Manager

kara.shadbolt@brownejacobson.com

+44 (0)330 045 1111

Related expertise

Health and life sciences

Independent health and care

Later living