

social care - private

The move towards personalised health and social care is changing both the commercial and regulatory landscapes in which private sector care providers operate. It is essential that providers focus on developing and sustaining a profitable and successful business whilst also ensuring their products and services comply with today's and tomorrow's laws, government regulations and best practice.

Our specialists understand these challenges and can support and enable your business to take advantage of the unique opportunities that we believe the movement towards personalisation will generate at all levels. Our goal is to provide you, your business and its employees with tailored practical, prompt and effective advice to address the unique pressures presented every day.

- our clients - nationally recognised residential and domiciliary care providers, registered charities, banks, venture capitalists, FTSE 100 companies, property developers, SME's, insurers and inspectorates (including the Care and Social Inspectorate for Wales)
- the region's largest team of dedicated lawyers - many are leaders in their field drawn together with a unique combination of regulatory, commercial transactional and care sector experience
- full range of specialist services - corporate transactions and all aspects of running and managing a commercial business including property, employment, health and safety and regulatory advice
- ongoing client training and support - seminars, training, legal updates and bulletins

Result: trusted experienced advisors; specialist support managing change; peace-of-mind with compliance.

about us

- Leading national law firm
- Offices in Nottingham, Birmingham and London
- Over 460 employees including 69 partners, and over 260 lawyers
- Blue chip client base across the public, private, insurance and not for profit sectors
- Award winning accolades

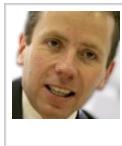
our awards



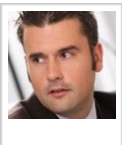
talk to us



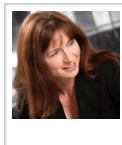
Oliver Pritchard
Partner
0115 976 6292



Chris Webb-Jenkins
Partner
0115 976 6175



Dai Durbridge
Associate
0115 976 6578



Julie Newton
Associate
0115 976 6079



Shaun McCabe
Associate
0115 976 6584



Sarah Hooton
Associate
0115 976 6033

Birmingham
0121 237 3900

Nottingham
0115 976 6000

London
020 7337 1000

www.brownejacobson.com