

## ambulance trusts

Ambulance Trusts are on the front-line of healthcare. The very nature of emergency provision presents its own unique challenges; often spur of the moment decisions are required. From consent to treatment, confidentiality and resource allocation to inquests, police and HSE investigations, our lawyers have an intimate knowledge of the ambulance service and its issues. Our goal is to deliver pragmatic and practical advice and ensure that we are on hand 24/7, to support you in meeting your challenges.

- our clients - over 50 NHS Health Trusts
- our credentials - appointed on the NHSLA panel of solicitors
- over 20 dedicated experts - based in Nottingham and Birmingham
- sector experience - advising trusts on diverse areas such as clinical negligence, inquests, consent and mental capacity, mergers, employment law, property law, health and safety, corporate manslaughter
- help always at hand - 24 hour helpline
- full service legal solution - including property management and disputes, employment, commercial contracts and data protection

**Result:** advice based on experience and knowledge of the sector; round-the-clock access to specialist lawyers

### talk to us



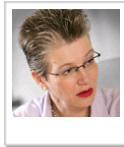
Lorna Hardman  
Partner  
0115 976 6228



Iain Patterson  
Partner  
0121 237 3924



Dominic Swift  
Head of Property  
0115 976 6148



Melanie Print  
Partner  
0121 237 4582



Simon Tait  
Partner  
0115 976 6559

### about us

- Leading national law firm
- Offices in Nottingham, Birmingham and London
- Over 460 employees including 69 partners, and over 260 lawyers
- Blue chip client base across the public, private, insurance and not for profit sectors
- Award winning accolades

### our awards



**Birmingham**  
0121 237 3900

**Nottingham**  
0115 976 6000

**London**  
020 7337 1000

[www.brownejacobson.com](http://www.brownejacobson.com)